



TRANSFORMATION OF POST-COVID WELFARE STATES IN EAST ASIA: BEYOND PRODUCTIVIST WELFARE CAPITALISM?

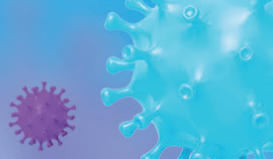


Date 24-25 June 2022

Venue Online (Gather Town and Zoom)

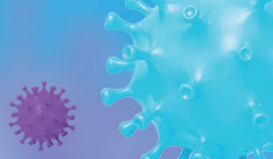
Organisers East Asian Social Policy Research Network,
Korea Institute for Health and Social Affairs, and
BK21 FOUR Project for Advancing Human Competence and
Government Capacity, Yonsei University





Programme overview (Korea Standard Time, KST, UTC+9)

Date	Time	Schedule
Day 1 24 June (Friday)	12:30-13:00	Venue Opening
	13:00-14:00	Welcome & Plenary Session 1
	14:00-14:10	Break
	14:10-15:50	Paper Session 1
	15:50-16:00	Break
	16:00-17:40	Paper Session 2
	17:40-18:40	Plenary Session 2
Day 2 25 June (Saturday)	18:40-19:40	Virtual Conference Reception
	13:00-14:00	Plenary Session 3
	14:00-14:10	Break
	14:10-15:50	Papers Session 3
	15:50-16:00	Break
	16:00-17:25	Paper Session 4
	17:25-17:35	Break
	17:35-17:45	Post-Graduate Student Paper Award
	17:45-19:00	Plenary Session 4 & Closing Ceremony



Plenary Sessions

Room: Conference Hall

1. Welcome & Plenary Session 1 (Day 1)

Welcoming Address 13:00-13:15

Chair: Chikako Endo (Osaka University)

Professor Young Jun Choi (EASP Chair, Yonsei University)
Professor Jae-jin Yang (Professor, Yonsei University)
Professor Tae Soo Lee (President, KIHASA)

Plenary Session 1 13:15-14:00

Chair: Chikako Endo (Osaka University)

Professor Tae Soo Lee (President, KIHASA)

Challenges and Responses of the Korean Welfare State

2. Plenary Session 2 (Day 1)

Plenary Session 2 In-conversation Interview 17:40-18:40

Interviewer: Young Jun Choi (Yonsei University)

Professor Noreena Hertz (University College London)

The Lonely Century - A Call to Reconnect

3. Plenary Session 3 (Day 2)

Plenary Session 3 13:00-14:00

Chair: Shih-jiun Shi (National Taiwan University)

Professor Paul Pierson (UC Berkeley)

After Covid: Lessons from the Missed Turn in U.S. Social Policy

4. Plenary Session 4 & Closing (Day 2)

Post-graduate Paper Award 17:35-17:45

Plenary Session 4 17:45-18:45

Chair: Bingqin Li (University of New South Wales)

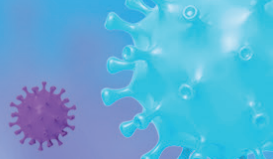
Professor Aya Abe (Tokyo Metropolitan University)

In Transition? Japanese Welfare State Before/After COVID-19

Closing Address 18:45-19:00

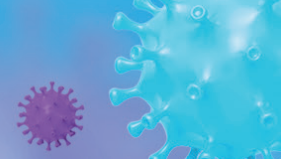
Chair: Young Jun Choi (Yonsei University)

Professor Tae Soo Lee (President, KIHASA)
Professor Young Jun Choi (EASP Chair, Yonsei University)



Paper Sessions Overview

	A	B	C	D	E	F	G	H
Session 1	Social Policy Responses to the Covid-19 Crisis	Social Policy Responses to the Covid-19 Crisis	Welfare States & Welfare Regimes	Governance, Democracy & Participation	Health & Social Care	Poverty, Inequalities, & Social Inclusion	Gender, Families and Social Capital	Population & Demographic Change
Session 2	Social Policy Responses to the Covid-19 Crisis	Panel Proposal 1 COVID-19 and Insecurity in Singapore	Welfare States & Welfare Regimes	Labour Markets & Employment	Health & Social Care	Poverty, Inequalities, & Social Inclusion	Ageing & Generations	-
Session 3	Panel Proposal 2 Critical Human Security and Social Policy Challenges in a Post-COVID World	Migration, Social Rights & Citizenship Stratification	Gender Inequality & Work-Family Reconciliation	Labour Markets & Employment	Higher Education Graduate Outcomes in China and East Asia	Panel Proposal 3 Food and Communities in Post COVID-19 Cities	Ageing & Generations	-
Session 4	Panel Proposal 4 COVID-19 Social Policy Response in East Asia: Tracking the Productivist Welfare Regime	Panel Proposal 5 Digitalisation and Social Services in Communities	Population & Demographic Change	Labour Markets & Employment	Education & Vocational Training	Alternative Social Policy	Ageing & Generations	-

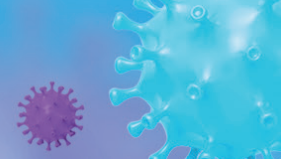


Paper Sessions 1

Friday, 24 June, 14:10-15:50

Session 1A	Room A - Social Policy Responses to the Covid-19 Crisis	Chair : Shih-jiun Shi (National Taiwan University)
	The Japanese welfare state and COVID-19: A corporate-centered conservative welfare regime and path-dependent responses	Masato Shizume (Ritsumeikan University)
	At what cost: Examining the impact of China's Zero Covid policy on Chinese Worker's collective actions	Kejun Chen (University of California, San Diego)
	How Stimulus Check Affects Welfare Attitude and Willingness to Pay Tax of People under Labor Market Threat during COVID 19?	Juhyun Bae (University of Missouri)
Session 1B	Room B - Social Policy Responses to the Covid-19 Crisis	Chair : Jack Chan (Sun Yat-sen University)
	COVID-19 pandemic in Hong Kong: Culturally responsive COVID-19 practice implications for ethnic minorities	Gizem Arat (Lingnan University) & Narine Nora Kerelian (Santa Clara University)
	"My Radio is my Wife and my Television is my Husband": Insights from how older adults' widows in Bono region of Ghana deals with Social Isolation and Loneliness in post- COVID-19 era	Jacob Oppong Nkansah (Lingnan University)
Session 1C	Room C - Welfare States & Welfare Regimes	Chair : Won Sub Kim (Korea University)
	Revalidating forgotten concepts of the Korean welfare state: family policy as the litmus paper of productivist welfare capitalism and Confucianism	Martin Gurin (University of Kassel)
	Explaining the welfare development in East Asia over the past three decades with Fuzzy Sets	Nan Yang (Liaoning University) & Stefan Kühner (Lingnan University)
	Building a Welfare State and Policy Learning in East Asia, Bounded Learning in Korean Long-term Care Insurance	Won Sub Kim(Korea University) & Migyeong Yun(Bremen University)
	The Decline of Familism? Public-Private Transfer Income in Taiwan and South Korea	Fang-Yi Huang (Yuan Ze University) & Chung-Yang Yeh (Soochow University)
Session 1D	Room D - Governance, Democracy & Participation	Chair : Yun Young Kim (Jeonbuk National University)
	Does the welfare state affect different types of political participation?	SeonHoe Han & Seoeun Oh & HyeSang Noh & YoungJun Choi (Yonsei University)
	Empowering-governance: An Approach to Rural Infrastructure Supply	Canyi Xie & Feng Wang (Shanghai University of Finance and Economics)
	Recapsulating China's COVID-19 Governance Policy: A Critical Investigative Evaluation	Xiaolong Zou & Yuan Tian (Jilin University)
	Political Corruption and Poverty Reduction under the Constraint of Technological Advances: A Global Panel Data Assessment	Leizhen ZANG (China Agricultural University) & Bingqian ZHANG (China Agricultural University) & Feng XIONG (Chongqing University)
Session 1E	Room E - Health & Social Care	Chair : Jingwei Alex He (The Education University of Hong Kong)
	Trials for Community Care Reform in South Korea: Limited Attempt but Invaluable Experiences	Bo-Yung Kim (Yeungnam University)
	Health literacy and active ageing among older persons in Hong Kong: Questing the role of social capital	Padmore Adusei Amoah (Lingnan University)

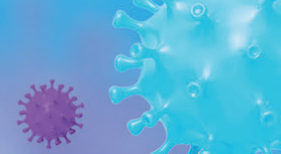
Session 1E	Why do mental hospitals remain in Japan?: Familism, Institutionalism, and the Residual Welfare State	Hiroshi Takebata (University of Hyogo)
	Longitudinal Impacts of Long-Term Care Insurance on Later-Life Health and Perceived Satisfaction: Evidence from China	Yinkai Zhang (University of Hong Kong) & Yu-Chih Chen (Washington University) & Julia Shu-Huah Wang (University of Hong Kong)
Session 1F	Room F - Poverty, Inequalities, & Social Inclusion	Chair : Yuko Tamiya (Kobe Gakuin University)
	Multidimensional Child Poverty in South Korea: Developing Measures to Assess Progress Towards the Sustainable Development Goals	Soyoon Weon (Korea Ministry of Health and Welfare) & Shailen Nandy (Cardiff University) & Marco Pomati (Cardiff University)
	How does a Change in the Number of Single-person Households affect Income Distribution Statistics in Korea?	Seungju Lee (Daegu University)
	The impact of Covid-19 on disabled people in China: A case study of people with a visual impairment	Minjie Chen (University of Nottingham)
	The Limited Use of ICT Solutions for Peripheral Inaccessibilities Faced by People with Disabilities in Myanmar	Dilshan Fernando (University of Guelph)
Session 1G	Room G - Gender, Families and Social Capital	Chair : Yasuhiro Kamimura (Nagoya University)
	The Moderating and Mediating Role of Psychosocial Social Capital in the Relationship Between East Asian Children's Socioeconomic Status and Subjective Well-Being: Evidence from South Korea, Taiwan, and Hong Kong	Stefan Kühner (Lingnan University) & Evelyn Addae Aboagye (Lingnan University) & Moses Adjei (Memorial University, Canada) & Maggie Ka Wai Lau (Lingnan University)
	Japan's administrative reform with a new agency for child-rearing families – breakthrough or paper tiger?	Mutsuko Takahashi (Keisen University)
	Social Capital, Resilience, and Mental Health among High School Students in China: Gender Differences during the COVID-19 Pandemic	Chaoxin Jiang (Zhejiang University)
	Exploring the Gender Gap in Welfare Attitudes: Occupational Skills and Perceptions of Pay Equity	In Hyeon Hwang (Yonsei University) & Hyunji Lim (Sogang University) & Cheol-Sung Lee (Sogang University)
Session 1H	Room H - Population & Demographic Change	Chair: Chikako Endo (Osaka University)
	Regional Population Decline and Policy Responses in Korea	Insu Chang (KIHASA)
	New pathways to adulthood for South Korean women: marriage behaviors of women born in 1931-1985 and policy implication	Sunyoung Choi (KIHASA)
	Longterm care in Korea: Current issues and strategies to improve its system	Eunha Namkung (KIHASA)



Paper Sessions 2 Friday, 24 June, 16: 00-17:40

Session 2A	Room A - Social Policy Responses to the Covid-19 Crisis	Chair : Ki Tae Kim (KIHASA)
	Combating Rising Unemployment amidst COVID-19: A Comparative Case Study of Policy Responses in Beijing and Singapore	Chunboramy Kuch & Ruan Zhizhi & Tang Wan Xin Louise (National University of Singapore)
	Optimizing Strategies for Implementing Emergency Social Policy: A Mixed Study Based on the Service Delivery Capability of Temporary Assistance in Beijing	Ling Yang (Beijing Normal University)
	COVID-19 Social Policy Responses in East Asia – Evidence from a Model Family Approach	Julia Shu-Huah Wang (University of Hong Kong) & Aya Abe (Tokyo Metropolitan University) & Ji Young Kang (Chungnam National University) & Inho Ku (Seoul National University) & Irene Y.H (National University of Singapore) & Chenhong Peng (University of Hong Kong) & Xi Zhao (Renmin University of China)
	Reimagining social security for socially isolated individuals: Japan-UK comparisons	Kiwako Endo (Kinjo Gakuin University) & Sachiko Horiguchi (Temple University, Japan Campus) & Teppei Sekimizu (Risscho University)
Session 2B	Room B - Panel Proposal 1 COVID-19 and Insecurity in Singapore	Chair : Tao Liu (Zhejiang University)
	Impact of COVID-19 on Low-income Families in Singapore	Ma Agnes ALCANTARA PACULDAR (National University of Singapore)
	Transnational Housing Insecurity: Mobility, Homelessness, and the COVID-19 Pandemic	Jeyda Simren SEKHON ATAC (National University of Singapore)
	Fiscal measures during crises in Hong Kong and Singapore	Yee Lok WONG & Kok-Hoe NG & Alfred M. WU (National University of Singapore)
Session 2C	Room C - Welfare States & Welfare Regimes	Chair : Yu Guo (Renmin University)
	Who Gets What and How Much? China's subnational variation of social safety net under diverse family profiles	Xi Zhao (Renmin University of China) & Julia Shu-Huah Wang (University of Hong Kong) & Qin Gao (Columbia University)
	Expanding social protection cover in developing East Asian countries	Mel Cousins (Trinity College, Dublin)
	Comparing the effects of different social assistance programs on mental health: Evidence from two-wave panel data in Hong Kong	Chenhong Peng & Paul Yip (University of Hong Kong)
	Killing two birds with one stone? The political economy of public pension reform in Korea	Jong-sung You (Gachon University)

Sessio 2D	Room D - Labour Markets & Employment	Chair : Misa Izuhara (Bristol University)
	The Impact of Multimorbidity on Labour Participation for Middle-Aged and Older Adults in China	Zhang Zhang (University of North Carolina) & Bo Hu (University of London) & Sean Y. Sylvia (University of North Carolina)
	The locational choices of poverty-relief labour force in rural China: patterns, influence factors and policy response.	Lin Shuyi (Renmin University)
	Associations of work support with job autonomy, organization commitment, and professional identity among Chinese social workers: Does income satisfaction matters?	Yuhang Cheng & Shan Jiang (Zhejiang University)
	Working Environment and Employment Choices of Mothers	Tomoe Naito (Seikei University)
Session 2E	Room E - Health & Social Care	Chair : Se Kyung Park (KIHASA)
	Changing Social Welfare Planning and Administration in the Local Governments under Creeping Performance Management in Japan	Koichi Hiraoka (Tokyo Online University)
	Political regulation , institutional effectiveness and the differences of healthcare service performance: Empirical evidence from provincial panel data in China (2004-2020)	Guohuang CAO & Jin HONG (Sun Yat-sen University)
	Depicting the dynamics of healthcare systems: the trajectory equifinality model in health policy research	Ryozo Matsuda (Ritsumeikan University)
	The mounting tension between managerialism and reflective social work practices: A critical study of Taiwan's Social Safety Network Project	Yei-Whei Lin (National Chengchi University)
Session 2F	Room F - Poverty, Inequalities, & Social Inclusion	Chair : Jong Hoon Kim (KIHASA)
	Internal fiscal constraints, top-down pressure or horizontal competition? Local integration of urban-rural social-assistance programmes in China	Chenhong Peng & Julia Shu-Huah Wang (University of Hong Kong)
	The Precarities of Double Poverty - Income and Time Poverty in Post-industrial South Korea	Tae-hwan Kim & Sophia Seung-yoon Lee (Chung-Ang University)
	To Sue or Not to Sue? The Dilemma of Family Maintenance Litigation Caused by the Social Assistance System in Taiwan	Li-Yun Ko (Social Affairs Bureau of Kaohsiung City Government, Taiwan) & Pei-Yuen Tsai (National Chengchi University)
	Economic Inequality, Mass-Elite Communication, and Political Polarization in South Korea	Eunyoung Ha (Yonsei University)
Session 2G	Room G - Ageing & Generations	Chair : Young Jun Choi (Yonsei University)
	Analysis of Active Aging Index within Different Welfare Regimes: A Comparative study among Sweden, Italy, South Korea and China	Lili Shang (University of Melbourne)
	Age-Friendly City Agenda: A Strategy to Promote Productive Ageing and Ageing in Place?	Sari Handayani (Lingnan University)
	Two levels of agency: the negotiation of intergenerational support arrangement in Chinese families.	Jiaxin Liu (University of York)
	The global paradigm shift towards active ageing and beyond: an analysis of policy documents by international organisations	Kaitlyn Juryung Cho (University of Oxford)



Paper Sessions 3 Saturday 25th June, 14:10-15:50

Session 3A	Room A - Panel Proposal 2 Critical Human Security and Social Policy Challenges in a Post-COVID World	Chair : Jae Jin Yang (Yonsei University)
	Origins, Debates and Development of Critical Human Security as a Conceptual and Comparative Analytical Framework	Patricia Kennett (University of Bristol) & Huck-ju Kwon (Seoul National University)
	Human Security and the Public Healthcare Systems in Indonesia and the Philippines: Policy Responses to the COVID-Pandemic	Huck-ju Kwon & YeEun Ha & Kyungchul Yang & Seongyeon Park & Sodam Yi (Seoul National University)
	Policy, Politics and Critical Human Security in a post-Covid World: A European Perspective	Patricia Kennett & Matthew Lariviere & Noemi Lendvai Bainton & Julia Gummy (University of Bristol)
	Crisis Management System and Covid Pandemic in Korea: Civic participation in risk governance	Eunju Kim (Hansung University) & Yoonkyung Oh (Korea Institute of Public Administration)
Session 3B	Room B - Migration, Social Rights & Citizenship Stratification	Chair : Sophia Seung-yoon Lee (Chung-Ang University)
	Asian International Students and Health in South Korea	Yoonkyung Kwak (Korea Institute for Health and Social Affairs)
	Getting stuck in the host country during the COVID-19 pandemic lockdown: The limbo of migrant workers in Daegu, South Korea	Steve Kwok-Leung CHAN (Keimyung University)
	Socio-ecological barriers to access COVID-19 vaccination among Burmese irregular migrant workers in Thailand	Tual Sawm Khai (Lingnan University)
	Migrant Care Workers, Deregulation and Citizenship	Reiko Ogawa (Chiba University)
Session 3C	Room C - Gender Inequality & Work-Family Reconciliation	Chair : Yoon Jeong Shin (KIHASA)
	Gender studies about Work-Family Reconciliation in HIV-Positive Gay Men in Japan	ATOBE Chisato (Rikkyo University) & IGARASHI Mai (University of Niigata Prefecture)
	Life-mix and the COVID Pandemic: meeting the challenges of changes in people's working and caring life	Ruby C M Chau (University of Nottingham) & Sam W K Yu (Hong Kong Baptist University)
	Who champions women's rights and interests in the legislature? Evidence from 21st century South Korea	Sunwoo Ryu (University of Oxford) & Mihyang Choi (Korea National Council on Social Welfare)
	Gendered Responsibility of Multigenerational Care: Examining 'Defamilialisation' Policies in Family Centred Welfare Regimes	Junko Yamashita (University of Bristol) & Naoko Soma (Yokohama National University)
Session 3D	Room D - Labour Markets & Employment	Chair : Young Jun Choi (Yonsei University)
	Impact of COVID-19 on Employment and Family Life of Child-Raising Generations	Yukari ITO (Osaka University) & Noriko YAMANO (Osaka Metropolitan University)
	The Determinants of Turnover Intention among Social Workers in Taiwan: Do Public Service Motivation and Working Conditions Matter?	Chung-Yang Yeh (Soochow University) & Helen K. Liu (National Taiwan University) & Yeun-Wen Ku (National Taiwan University)
	For a more sustainable social care service: occupational hazard of the social service workers and its impact on their subjective job security in South Korea	Koeun Park (Health Insurance Research Institute, South Korea) & Hyoung Jin (KU Leuven)
	Working precariously within the neoliberal social welfare system in Japan: Findings from the qualitative research with municipal office workers during the COVID-19 pandemic	Viveka Ichikawa & Izumi Niki & Izumi Sakamoto (University of Toronto)

Session 3E	Room E - Higher Education Graduate Outcomes in China and East Asia	Chair : Chikako Endo (Osaka University)
	The Broken Promise of Human Capital Theory: Social Embeddedness, Graduate Entrepreneurs, and Youth Employment in China	Yuyang Kang & Ka Ho Mok (Lingnan University)
	Massification and Privatisation of Higher Education in East Asia: Critical Reflections on Graduate Employment from the Sociological and Political Economic Perspectives	Guoguo Ke & Zhen Tian (Lingnan University)
	Employability and Employment Choice of Chinese Higher Education Graduates: A Perspective of Uncertain Futures	Weiyang Xiong (Lingnan University) & Youliang Zhang (Lingnan University & Beijing University of Technology)
	Where do China's Top University Graduates Go: Trends and Implications	Kai Zhao & Ka Ho Mok (Lingnan University)
Session 3F	Room F - Panel Proposal 5 Digitalisation and Social Services in Communities	Chair : Peiyuen Tsai (National Chengchi University)
	Digitalization, Citizenship and Evolving Welfare Regimes: The emergence of 'digital citizenship'?	Ilan Katz (University of New South Wales) & Johan Nordenthaard (University of Linköping)
	Bridging the digital divide for older adults in health services: Chinese Elder Peoples' Perceptions of E-Health Services	Genghua Huang (Lingnan University) & Ka Ho Mok (Lingnan University) & Yin Ma (Lanzhou University)
	Digitalisation and urban community food security in China	Bingqin Li (University of New South Wales) & Jiwei Qian (Singapore National University) & Juan Xu (Huazhong Science and Technology)
	Public Service Resilience on the Cloud: State Mobilization and Digital Self-governance in China's COVID-19 Response	Xin Han (University of Pittsburgh)
Session 3G	Room G - Ageing & Generations	Chair : Bo Yung Kim (Yeungnam University)
	Social survey and legal analysis of medical autonomy and adult guardianship systems in Taiwan	Chao-Yin Lin (National Taipei University) & Yu-Zu Tai (National Chengchi University)
	The Solution to Safeguard the Frail Elderly: A Comparative Study of the Adult Guardianship System between China and Japan	Yan Zi (Waseda University)
	Built Environments and depressive symptoms among community-dwelling older adults: a moderated mediation of sense of community and intergenerational relationships	Jiajia Zhou (Hong Kong Polytechnic University)
	What does 'wellbeing' mean in the context of unpaid care of older people and why does it matter? - Findings from a qualitative study in Wales, UK	Maria Cheshire-Allen (Swansea University)

Paper Sessions 4 Saturday 25th June, 16: 00-17:25

Session 4A	Room A - Panel Proposal 4 COVID-19 Social Policy Response in East Asia: Tracking the Productivist Welfare Regime	Chair : Soo Hyun Lee (King's College London)
	COVID-19 Policy Responses in Hong Kong: "Big Market, Small Government, and Big Civil Society?"	Yee Lok WONG (National University of Singapore)
	The Continuity of Singapore's Productivist Welfare State: Evidence from the COVID-19 Pandemic	Mohnish KEDIA (National University of Singapore)
	COVID-19's Illusory Effect on Korea's Welfare Regime	Soyoung KIM (Nanyang Technological University)
Session 4B	Room B - Panel Proposal 3 Food and Communities in Post COVID-19 cities	Chair : Junko Yamashita (Bristol University)
	Urban Food Security during COVID-19 and the Community Response in Stockholm and Seoul	Johan Nordensvärd (Linköping University) & Younghwan Byun (Stockholm University) & Carl- Johan Sommar (Linköping University)
	Disrupting from the bottom: community-based food governance in London during COVID-19	Catalina Turcu & Martina Rotolo (University College London)
	Collaborative governance in emergencies: community food supply in COVID-19 in Wuhan, China	Bingqin Li (University of New South Wales) & Jiwei Qian (National University of Singapore) & Juan Xu (Huazhong University of Science and Technology) & Yiran Li (University of New South Wales)
Session 4C	Room C - Population & Demographic Change	Chair : Ijin Hong (Sun Yat-sen University)
	The Internal Migration Policies and Skill Selection of Migrant Workers in China – Evidence from the 2014 Hukou Reform	Julia Shu-Huah Wang (University of Hong Kong) & Jing You (Renmin University) & Yinan Yao (University of Hong Kong) & Fengyu Wu (University of Hong Kong) & Chenhong Peng (University of Hong Kong)
	Fertility As Buffer? The Impact of Overtime Work on Women's Expectations of Having a Second Child in Post-One Child Policy Era Evidence from China Labour Force Dynamics Survey (CLDS2016)	Jinghui HUANG (Chinese University of Hong Kong)
	A study on the influencing factors of the COVID-19 pandemic on the willingness of Chinese residents to have three children	Siwen Qian & Yuting Tang & Qiu Sun & Zi Li (Chongqing Technology and Business University)

Session 4D	Room D - Labour Markets & Employment	Chair : Hyeon Kyeong Kim (KIHASA)
	Beyond work-first activation in a productivist welfare regime? A micro-institutional approach to old-aged employment service in Hong Kong	Tat Chor AU-YEUNG (Lingnan University) & Ka Ki CHAN (Royal Holloway University of London)
	COVID-19 and Gig Work: Experiences of platform workers in Singapore	Ma Agnes ALCANTARA PACULDAR (National University of Singapore)
	Rethinking Individualised Retirement Protection in Hong Kong During Uncertain Times	Felix Sai Kit NG (Caritas Institute of Higher Education, Hong Kong)
Session 4E	Room E - Education & Vocational Training	Chair : Sang Hun Lim (Kyung Hee University)
	A critical review focusing on teaching and learning of Chinese students in British Russell Group Universities	Libby Steel (University of Nottingham)
Session 4F	Gender disparities in skill level in Korea - Evidences from PIAAC data	Soorin Yoon (Korea Research Institute for Vocational Education and Training)
	Room F - Alternative Social Policy	Chair : Stefan Kuhner (Lingnan University)
	Path Creation in the Study of Social Policy Change: A Potential Alternative Framework	Tauchid Komara Yuda (Lingnan University)
	Welfare dependency or minimum guarantee: An understanding from the coordination between Dibao and relevant social policy programs in China	Jianping Yao (North China Electric Power University)
Session 4G	Three policy alternatives to strengthen active citizenship: Universal basic income, and universal basic services and the social economy	Young Jun Choi (Yonsei University) & Chikako Endo (Osaka University)
	Room G - Ageing & Generations	Chair : Koichi Hiraoka (Tokyo Online University)
	Changing Family Role in Long-term Care Provision for the Aged in China: A Case Study of Guangzhou	ZHANG Jiayu (University of York)
	Preferences for Old-Age Care Arrangement in East Asian Familialistic Welfare State: The Examination of the Taiwanese Case	Chung-Yang Yeh & Yi-Chun Chou (Soochow University)
Session 4H	Whose Direction? Conundrums of Implementing Consumer Direction in Home-based Care: Experiences of Older Chinese and Family Members	Jinbao Zhang (University of Hong Kong) & Julia Shu-Hua Wang (University of Hong Kong) & Wing-kit Chan (Sun Yat-Sen University) & Danhong Lan (Sun Yat-Sen University)